

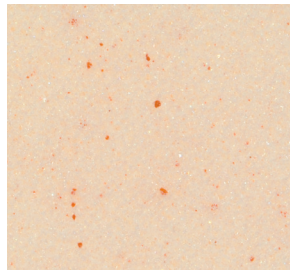


## PROTech COLLECTION

The finest Institutional Mattress on the market today. Available in 8," 9" and 10" Models for use in all Applications

### Copper-Infused Performance Foam

- Enhanced comfort with copper's cooling temperature regulation
- Dynamic support from copper's 'firming up' response to your body



### SupportSense™ Comfort Foam

- Delivers a comfortable sleep surface with firm support
- Long-lasting and resistant to body impressions

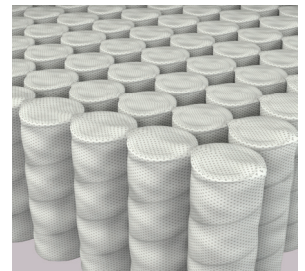


### Always CertiPUR-US® Certified Foams

- Certified foams made without harmful chemicals or heavy metals, and low VOCs

### FlexErgo™ Support Core

- Engineered with super-strong support coils to provide consistent sleep surface with edge-to-edge support
- Dynamic response and motion isolation with individual movement to reduce sleep disruption
- 360° Foam Encasement for support and durability



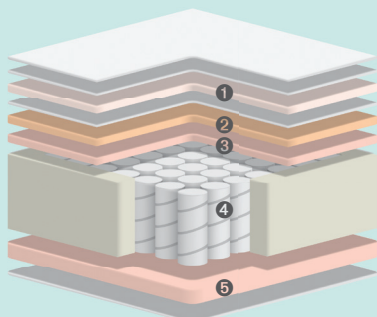
### Cover with LiveSmart Fabric

- LiveSmart fabric is moisture repellent and stain resistant
- Spills bead up and sit on top of fabric for easy cleaning
- Designed for heavy duty wear with barrier protection to keep fabric clean
- Performance finish for inherent durability and longevity

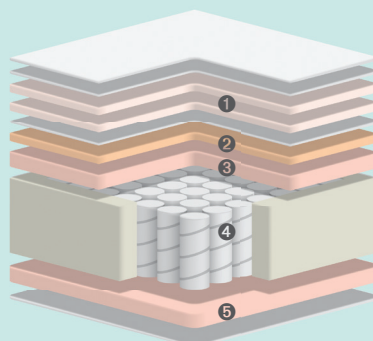


#### CONSTRUCTION:

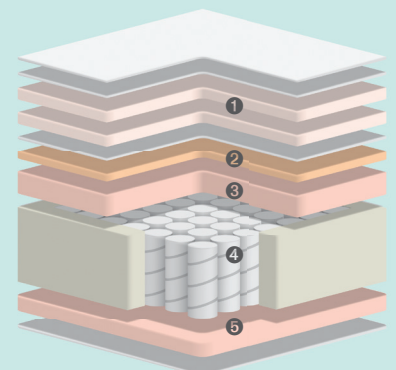
- 1 LiveSmart Cover with Single (8") / Dual Layers (9" & 10") Medium Firm SupportSense Comfort Foam
- 2 Copper-Infused Performance Foam
- 3 Medium Firm SupportSense Comfort Foam
- 4 FlexErgo Support Core with 360° Foam Encasement
- 5 Support Base Foam



8" Profile—G30308



9" Profile—G30309



10" Profile—G30310



2-Sided



**Cover Options**

**Pictured Above:**  
48112PR3AB  
Parker



48112KB3AB  
Kyle

A48112

**Hand-Crafted in America / 12" Plush**



**Designed to deliver an immediate plush, soft feel. Featuring comforting softness combined with ergonomic support for your best night's sleep.**

**Custom-Milled Fabrics and Quality Covers**

- Custom-milled fabrics chosen for durability and comfort
- Dual quilted layers create cradling comfort, added pressure relief, and improved durability

**OmniSense™ Comfort Foam**

- Fast response for immediate comfort and relaxation
- Long-lasting and resistant to body impressions

**SupportSense™ Comfort Foam**

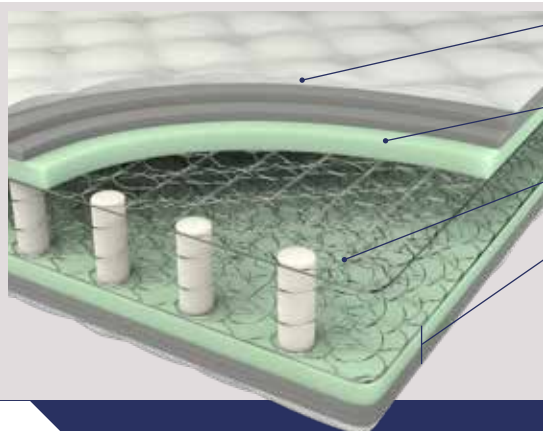
- Delivers a comfortable sleep surface with firm support
- Long-lasting and resistant to body impressions

**ResponseSpring™ Support System with Edge Supports**

- Unique shape of sturdy offsetting coils provides consistent surface support edge-to-edge
- Open design improves airflow and temperature regulation

**Always CertiPUR-US® Certified Foams**

- Certified foams made without harmful chemicals



Dual Quilted Layers: Soft OmniSense Comfort Foam (2 Layers)

Medium Firm SupportSense Comfort Foam

ResponseSpring Support System with Edge Supports

TWO-SIDED CONSTRUCTION

**Non-Prorated Warranty**



**PROFILE:**

- 12 INCH PROFILE

**COMFORT FEEL:**

- PLUSH

**IDEAL FOR:**

- SIDE & BACK SLEEPERS



**CertiPUR-US®**  
Certified Foams



**GLENN HOSPITALITY**  
Hospitality Furnishings & Supply Solutions